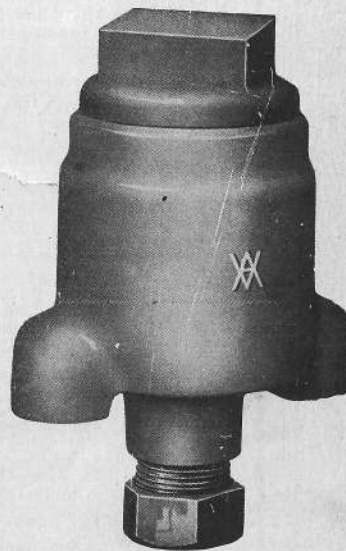


**Westinghouse Air Brake
Company**

**Air Brake Division
Wilmerding, Pa., U.S.A.**




**Air Compressor
Oil Cups**

Part Catalog No. 3204-5

January, 1938

(SUPERSEDING ISSUE OF JANUARY, 1931)



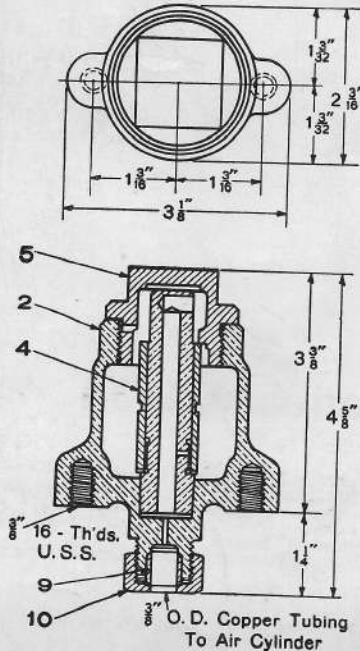
(Reprinted, March, 1953)

**TYPE "B-3" AUTOMATIC AIR CYLINDER OIL CUPS
FOR STEAM DRIVEN AIR COMPRESSORS
MOUNTED ON THE CENTER PIECE**

Type "B-3" Automatic Air Cylinder Oil Cup mounted on the Center Piece unless otherwise specified.

TYPE OF COMPRESSOR					
10 1/2" C.C.	8 1/2" C.C.	11"	9 1/2"	8"	*No. Per Pkg.
Pc. No.	Pc. No.	Pc. No.	Pc. No.	Pc. No.	
78072	77290	76590	76630	79314	
89042 (2 Req'd)	89042 (2 Req'd)	89042	89042	89042	
78067	91812	76225	76582	79311	
78071					10
78069					10
	77287				10
	77289				10
		76591			10
			76622		10
				79313	10
78070	77286				10
78068	77288				10
		76579	76581	79312	10
71756	71756	71756	71756	71756	40
71757	71757				15
71755	71755	71755	71755	71755	50
71754	71754				50
71748 (2 Req'd)	71748 (2 Req'd)	71748	71748	71748	50
71727 (2 Req'd)	71727 (2 Req'd)	71727	71727	71727	100
24286 (4 Req'd)	24286 (4 Req'd)	24286 (2 Req'd)	24286 (2 Req'd)	24286 (2 Req'd)	
17173 (4 Req'd)	17173 (4 Req'd)	17173 (2 Req'd)	17173 (2 Req'd)	17173 (2 Req'd)	

Set of Oil Cups complete with fittings, for one compressor as per the following schedule:					
Type "B-3" Automatic Oil Cup less Bracket, Oil Tube and Union Connection to Air Cylinder					
Bracket					
Oil Tube and Union Connection to L. P. Air Cylinder, complete (Includes Pc. 78070 and 71756)					
Oil Tube and Union Connection to H. P. Air Cylinder, complete (Includes Pc. 78068 and 71757)					
Oil Tube and Union Connection to L. P. Air Cylinder, complete (Includes Pc. 77286 and 71756)					
Oil Tube and Union Connection to H. P. Air Cylinder, complete (Includes Pc. 77288 and 71757)					
Oil Tube and Union Connection to Air Cylinder, complete (Includes Pc. 76579 and 71756)					
Oil Tube and Union Connection to Air Cylinder, complete (Includes Pc. 76581 and 71756)					
Oil Tube and Union Connection to Air Cylinder, complete (Includes Pc. 79312 and 71756)					
3/8" O. D. Oil Tube to L. P. Air Cylinder					
3/8" O. D. Oil Tube to H. P. Air Cylinder					
3/8" O. D. Oil Tube to Air Cylinder					
1/4" Union Stud Connection, complete (Compression type) for 3/8" O. D. Copper Tubing (Includes Pc. 71755, 71748 and 71727)					
3/8" Union Ell Connection, complete (Compression type) for 3/8" O. D. Copper Tubing (Includes Pc. 71754, 71748 and 71727)					
1/4" Union Stud					
3/8" Union Ell					
Union Nut					
Union Thimble for 3/8" O. D. Copper Tubing					
3/8"x7/8" Hex. Hd. Cap Screw for securing Oil Cup to Bracket					
3/8" Lock Washer					



Piece No. 89042 Type "B-3" Automatic Oil Cup, complete

Piece No.	Ref. No.	*No. Per Pkg.	Description
89043	2		Body with Valve Bushing
70883	4		Sleeve
88418	5		Cap Nut
71727	9	100	Sleeve for 3/8" Copper Tubing
71748	10	50	Union Nut (Compression type)

Net Weight 2 1/2 lbs.

*NOTE—Column headed "No. Per Pkg." indicates the items for which standard shipping packages have been established and the number contained in the package. Orders placed in these quantities and multiples thereof will facilitate shipments and provide convenient means for handling in store room stock.

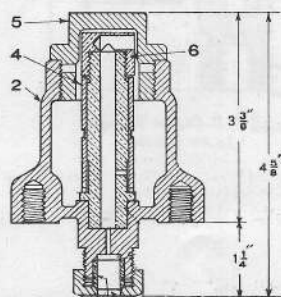
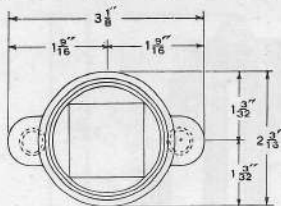
Prices will be quoted upon application

Orders should give **PIECE NUMBER** and **NAME** of part wanted

**TYPE "B-3" AUTOMATIC AIR CYLINDER OIL CUPS
FOR STEAM DRIVEN AIR COMPRESSORS
MOUNTED ON THE TOP HEAD**

Type "B-3" Automatic Air Cylinder Oil Cup is mounted on the Top Head only when specified.

TYPE OF COMPRESSOR						
10 1/2" C.G.	8 1/2" C.G.	11"	9 1/2"	8"	*No. Per Pkg.	
Pc. No.	Pc. No.	Pc. No.	Pc. No.	Pc. No.		
72110	70879	70976	70880	72333		Set of Oil Cups complete with fittings, for one compressor as per the following schedule:
89042 (2 Req'd)	89042 (2 Req'd)	89042	89042	89042		Type "B-3" Automatic Oil Cup, less Bracket, Oil Tube and Union Connection to Air Cylinder
72094	91812	70973	84538	84538		Bracket
72111					10	Oil Tube and Union Connection to L. P. Air Cylinder, complete (Includes Pc. 72092 and 71756)
72112					10	Oil Tube and Union Connection to H. P. Cylinder, complete (Includes Pc. 72093 and 71757)
	70889				10	Oil Tube and Union Connection to L. P. Air Cylinder, complete (Includes Pc. 70888 and 71756)
	70891				10	Oil Tube and Union Connection to H. P. Air Cylinder, complete (Includes Pc. 70890 and 71757)
		70977			10	Oil Tube and Union Connection to Air Cylinder, complete (Includes Pc. 70968 and 71756)
			70893		10	Oil Tube and Union Connection to Air Cylinder, complete (Includes Pc. 70892 and 71756)
				72334	10	Oil Tube and Union Connection to Air Cylinder, complete (Includes Pc. 72305 and 71756)
72092	70888				10	3/8" O. D. Oil Tube to L. P. Air Cylinder
72093	70890				10	3/8" O. D. Oil Tube to H. P. Air Cylinder
		70968	70892	72305		3/8" O. D. Oil Tube to Air Cylinder
71756	71756	71756	71756	71756	40	1/4" Union Stud Connection, complete (Compression type) for 3/8" O. D. Copper Tubing (Includes Pc. 71755, 71748 and 71727)
71757	71757				15	3/8" Union Ell Connection, complete (Compression type) for 3/8" O. D. Copper Tubing (Includes Pc. 71754, 71748 and 71727)
71755	71755	71755	71755	71755	50	1/4" Union Stud
71754	71754				50	3/8" Union Ell
71748 (2 Req'd)	71748 (2 Req'd)	71748	71748	71748	50	Union Nut
71727 (2 Req'd)	71727 (2 Req'd)	71727	71727	71727	100	Union Thimble for 3/8" O. D. Copper Tubing
24286 (4 Req'd)	24286 (4 Req'd)	24286 (2 Req'd)	24286 (2 Req'd)	24286 (2 Req'd)		3/8"x7/8" Hex. Hd. Cap Screw for securing Oil Cup to Bracket
17173 (4 Req'd)	17173 (4 Req'd)	17173 (2 Req'd)	17173 (2 Req'd)	17173 (2 Req'd)		3/8" Lock Washer



203 204 O. D. COPPER PIPE TO AIR CYLINDER

The Type "B" Automatic Oil Cup Pc. No. 70885 shown below is superseded by the Type "B-3" Automatic Oil Cup Pc. No. 89042 shown on page 2, and is listed only for convenience in ordering repair parts.

Piece No. 70885 Type "B" Automatic Oil Cup, complete

Piece No.	Ref. No.	*No. Per Pkg.	
71714	2		Body with Valve Bushing
70883	4		Sleeve
70884	5		Cap Nut
71709	6		Valve Bushing Nut
71748	203	50	Union Nut (Compression type)
71727	204	100	Sleeve for 3/8" Copper Tubing

Net Weight 2 1/2 lbs.

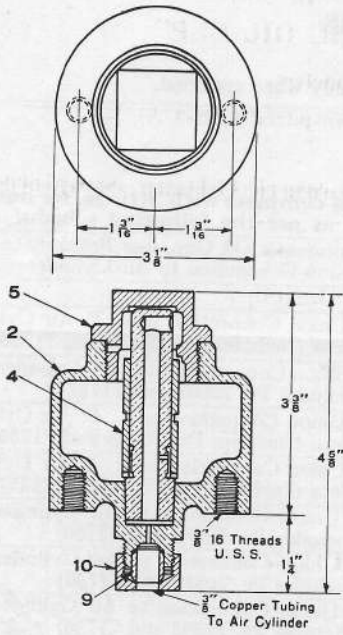
*NOTE—Column headed "No. Per Pkg." indicates the items for which standard shipping packages have been established and the number contained in the package. Orders placed in these quantities and multiples thereof will facilitate shipments and provide convenient means for handling in store room stock.

Prices will be quoted upon application

Orders should give **PIECE NUMBER** and **NAME** of part wanted

"B-3-A" AUTOMATIC OIL CUP
(Double Capacity)

Piece No. 88232 "B-3-A" Automatic Oil Cup, complete



Pc. No.	Ref. No.	Description
88419	2	Body with Valve Bushing
70883	4	Sleeve
88418	5	Cap Nut
71727	9	Sleeve for 3/8" Copper Tubing
71748	10	Union Nut

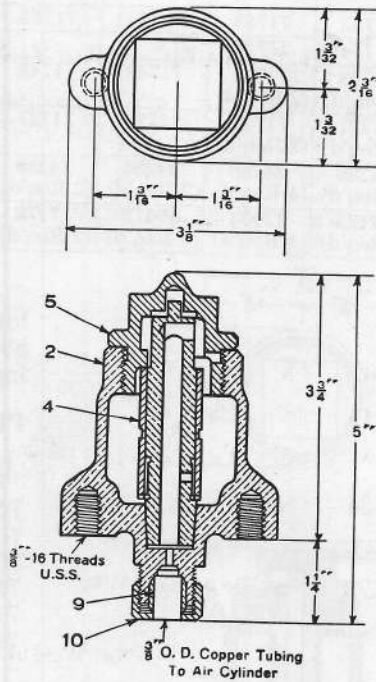
Net Weight 3 lbs.

"B-3-C" AUTOMATIC OIL CUP
(Half Rate of Feed as Compared to B-3)

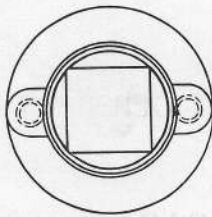
Piece No. 92950 Type "B-3-C" Automatic Oil Cup, complete

Pc. No.	Ref. No.	Description
92948	2	Body with Valve Bushing
70883	4	Sleeve
92947	5	Cap Nut
71727	9	Sleeve for 3/8" Copper Tubing
71748	10	Union Nut

Net Weight 2 1/2 lbs.



Prices will be quoted upon application
Orders should give PIECE NUMBER and NAME of part wanted

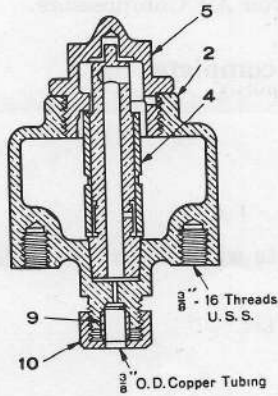


"B-3-D AUTOMATIC OIL CUP"

(Double Capacity)

(Half Rate of Feed as Compared to B-3-A)

Piece No. 506532 "B-3-D" Automatic Oil Cup, complete



Pc. No.	Ref. No.	Description
506531	2	Body with Valve Bushing
70883	4	Sleeve
92947	5	Cap Nut
71727	9	Sleeve for $\frac{3}{8}$ " Copper Tubing
71748	10	Union Nut

Net Weight 3 lbs.

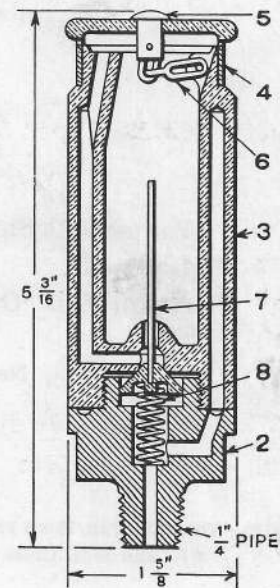
The Oil Cups and Oil Cock shown below have been superseded by the Type "B-3" Automatic Oil Cup and are no longer furnished unless specially ordered.

AUTOMATIC AIR CYLINDER OIL CUP

The Automatic Air Cylinder Oil Cup is suitable for use on 11-inch, 9½-inch and 8-inch Air Compressors.

Piece No. 9769 Automatic Oil Cup, complete

Pc. No.	Ref. No.	Description
9822	2	Base
9767	3	Body
9045	4	Cap
10194	5	Pin in Cap for Chain
9823	6	Chain
9770	7	Piston
9772	8	Piston Spring



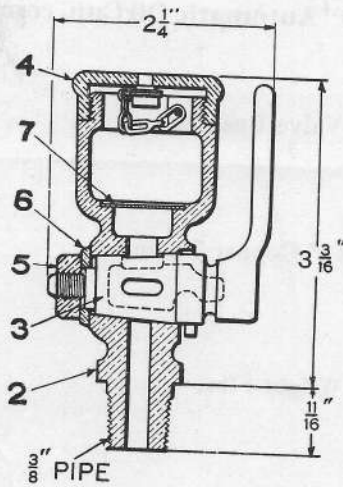
Net Weight 1¾ lbs.

Prices will be quoted upon application
Orders should give PIECE NUMBER and NAME of part wanted

OIL CUP

*For use with Steam Driven Air Compressors.

Piece No. 21414 Oil Cup, complete



Pc. No.	Ref. No.	Description
21406	2	Body
21408	3	Key
21592	4	Cover, complete with Chain
15515	5	Key Nut
4750	6	Key Washer
2046	7	Strainer

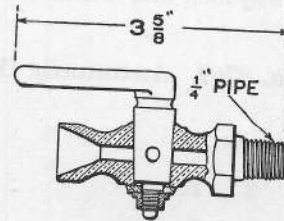
Net Weight 1 1/8 lbs.

OIL COCK

For use with Steam Driven Air Compressors.

Piece No. 1916 Oil Cock, complete

Net Weight 1/2 lb.



*NOTE—When Oil Cup, Piece 21414 is to be used in connection with Steam Driven Air Compressors, other than the 8 1/2" and 10 1/2" Cross Compound, orders should specify 3/8" to 1/4" Fitting, Piece No. 27571.

Prices will be quoted upon application
 Orders should give **PIECE NUMBER** and **NAME** of part wanted

Westinghouse Air Brake Company

Air Brake Division

Wilmerding, Pa., U. S. A.

OFFICES

ATLANTA 3	- - - - -	Candler Building
BOSTON 16	- - - - -	Statler Building
CHICAGO 4	- - - - -	Railway Exchange Building
CLEVELAND 15	- - - - -	Midland Building
DENVER 2	- - - - -	Denver National Building
HOUSTON 2, TEX.	- - - - -	Commerce Building
LOS ANGELES 14	- - - - -	Pacific Electric Building
MEXICO, D. F., MEXICO	- - - - -	Edificio Aztlan
NEW YORK 1	- - - - -	Empire State Building
ST. LOUIS 3	- - - - -	Shell Building
ST. PAUL 1	- - - - -	First National Bank Building
SAN FRANCISCO 5	- - - - -	Matson Building
SEATTLE 1	- - - - -	Securities Building
WASHINGTON 6, D. C.	- - - - -	Ring Building



ASSOCIATED COMPANIES

CANADIAN WESTINGHOUSE COMPANY, LTD.
Hamilton, Ontario, Canada

WESTINGHOUSE BRAKE & SIGNAL
COMPANY, LTD.
London, England

COMPAGNIA ITALIANA WESTINGHOUSE
FRENI & SEGNALI
Torino, Italy

COMPAGNIE DES FREINS & SIGNAUX
WESTINGHOUSE
Paris, France

WESTINGHOUSE BRAKE (AUSTRALASIA)
PROPRIETARY, LTD.
Concord West, New South Wales, Australia

WESTINGHOUSE BREMSSEN GESELLSCHAFT, m.b.H.
Hanover, Germany

UNITED STATES DEPARTMENT OF JUSTICE
FEDERAL BUREAU OF INVESTIGATION
WASHINGTON, D. C. 20535

MEMORANDUM FOR THE DIRECTOR, FBI
FROM: SAC, NEW YORK (100-100000)
SUBJECT: [Illegible]

[The following text is extremely faint and largely illegible due to the quality of the scan. It appears to be a memorandum or report detailing an investigation.]



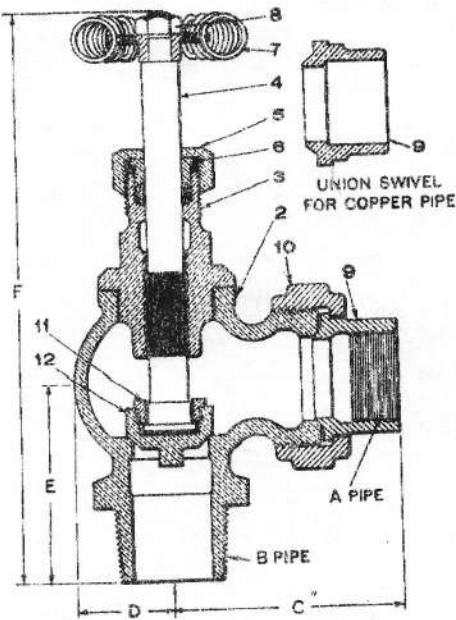
[Faint, illegible text at the bottom of the page, possibly a signature block or distribution list.]

STEAM VALVES

The 1" Steam Valve is used for steam pipe connection to boiler with one 8" or one 9½" single stage air compressor.

The 1¼" Steam Valve is used for steam pipe connection to boiler with one 11", two 8" or two 9½" single stage compressors, or one 8½" cross compound compressor.

The 1½" Steam Valve is used for steam pipe connection to boiler with one 10½", two 8½" or 10½" cross compound compressors, or two 11" single stage compressors.



Schedule of Weights and Dimensions

Size	Net Weight (lbs.)	A	B	C	D	E	F
1"	5 1/8	1"	1 1/2"	3 1/8"	1 1/8"	2 1/8"	8 1/4"
1 1/4"	7 3/8	1 1/4"	1 1/2"	3 3/4"	1 1/8"	3 1/8"	9 1/4"
1 1/2"	10 1/2	1 1/2"	2"	4 1/8"	1 1/8"	3 3/8"	10 1/8"

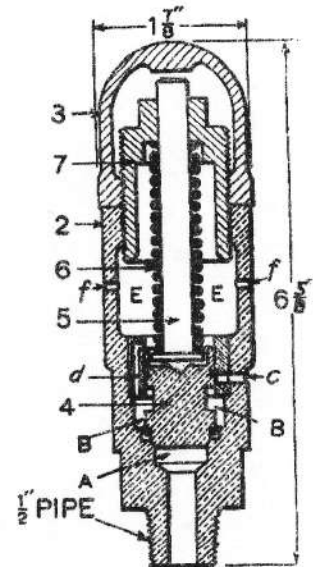
		1"	1 1/4"	1 1/2"
1" Steam Valve, complete.....		17941		
1 1/4" Steam Valve, complete.....			17402	
1 1/2" Steam Valve, complete.....				38268
Ref. No.		Pc. No.	Pc. No.	Pc. No.
2	Valve Body.....	17985	17483	38147
3	Neck Piece.....	2057	17484	38149
	Valve Stem, Complete (Includes 4, 8, 11 and 12)	20315	20314	38269
4	Valve Stem.....	3689	17488	38150
5	Packing Nut.....	2055	2055	2055
6	Packing Gland.....	2056	2056	2056
7	Hand Wheel.....	3681	38152	38153
8	Hand Wheel Nut.....	3667	3667	3667
9	Union Swivel.....	1949	41825	33169
10	Union Nut.....	1948	2154	33171
11	Valve Nut.....	3691	17489	17489
12	Valve.....	3690	17485	38146

SAFETY VALVE

The Safety Valve is used to protect against excessive reservoir pressure.

- Piece No. 28487 E-1 Safety Valve (5 to 25 lbs.), complete
- Piece No. 18598 E-1 Safety Valve (10 to 40 lbs.), complete
- Piece No. 10526 E-1 Safety Valve (35 to 75 lbs.), complete
- Piece No. 24106 E-1 Safety Valve (60 to 100 lbs.), complete
- Piece No. 24107 E-1 Safety Valve (80 to 130 lbs.), complete
- Piece No. 24108 E-1 Safety Valve (110 to 150 lbs.), complete

Pc. No.	Ref. No.	Description
10528	2	Body, bushed
9029	3	Cap Nut
10524	4	Valve
10523	5	Valve Stem
18286	6	Spring (5 to 25 lbs.)
18414	6	Spring (10 to 40 lbs.)
1498	6	Spring (35 to 75 lbs.)
3639	6	Spring (60 to 100 lbs.)
24112	6	Spring (80 to 130 lbs.)
13434	6	Spring (110 to 150 lbs.)
9030	7	Regulating Nut



Net Weight 3 lbs.

Prices will be quoted upon application

Orders should give **PIECE NUMBER** and **NAME** of part wanted

